



岩国

IWAKUNI

Travel Guide



Yamaguchi Travel Support CallCenter

083-902-6370

skype yamaguchicall

※The Service Available 24/7 ※Free of Charge

Information about Yamaguchi Prefecture Only
Telephone or Skype Communication charges may apply

To call from overseas or use a roaming service, dial
1 +81-83-902-6370



IWAKUNI official
Tourism Website



IWAKUNI
promotional video



Kintaikyo Bridge 錦帯橋

(registered as one of Japan's greatest bridges)

Kintaikyo Bridge is one of the most famous wooden bridges in the world built in 1673 by the feudal lord, Hiroyoshi Kikkawa, during the Edo period. The bridge is made of five consecutive arches in order to be resistant to floods. The smoothly curved wooden arches are highly regarded as one of the most sophisticated and original pieces of modern bridge engineering. The present bridge was reconstructed in 1953 using traditional methods and techniques. Kintaikyo Bridge is one of Japan's most valued treasures. Visitors enjoy with beautiful surrounding nature, seasonal flowers and trees as well as the view of the traditional castle town

Admission Fees: Adults: 310yen Elementary school students: 150yen
 ※Set Discount Tickets are available for touring Kintaikyo Bridge, Ropeway, and Iwakuni Castle.
 TEL/0827-29-5116 (Iwakuni City Tourism Promotion Section)

1 Nishiki River Festival of Water

This festival is held in appreciation of the abundant blessings of Nishiki River. About 6000 fireworks are set off near the Kintaikyo Bridge and adorn the night-sky beautifully. During the daytime, visitors enjoy music concert and join treasure hunting and other events.



2 Ukai (cormorant fishing) of Kintaikyo Bridge

Ukai is a traditional fishing method, which uses trained cormorants to catch river fish such as sweetfish (ayu). This type of fishing started about 380 years ago and it is still preserved as one of Iwakuni's summer features. Dinner cruises are available, where you can watch ukai performance right in front of you. Visitors enjoy the beautiful flames of Kagari-bi (fishing fire lanterns) reflecting the cormorant and the fisherman on the dark surface of the river at night.



• Period: 6/1~9/10 • Hours: 19:00~21:00
 • Fees: Adults: 2200yen Elementary school students: 1100yen ※Extra charge needed for fireworks
 • Reservation: Iwakuni Tourist Association Ukai office • TEL0827-28-2877

3 Iwakuni Domain Matchlock-gun Troop

(Firearm-equipped Army of the Iwakuni Clan)



The current Matchlock-gun troop is the firearm performance team. The team traditionally perform matchlock shooting training in the style of an old samurai. The members perform at several events throughout the year and practice each month near Kintaikyo Bridge.

4 Kintaikyo Bridge Festival



The highlight of the event is the Sankin-kotai parade, where you can see people dressed like local daimyo (lords) and his servants, crossing the Kintaikyo Bridge. Sankin-kotai is a system under which feudal lords in the Edo period were required to spend every other year in residence in Edo. On the day of the event, visitors can watch and enjoy the Iwakuni Taiko performance as well as the Iwakuni Domain Matchlock-gun Troop performance. (Held every April)

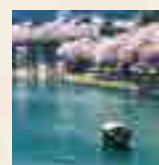
5 Excursion Boats

• Public Boat Ride • Ride time: 20 min
 • Fees: Adults: 500yen Elementary school students: 300yen



6 Sakura Bune

• Operating Period: Late March to May 31st (Sat, Sun, and Holidays)
 Everyday in Cherry Blossom Season
 • Operating Hours: 11:00~17:00



7 Momiji Bune

• Operating Period: September 11th to the end of September, November 1st to the end of November.
 Everyday during autumn, while the leaves are changing color.
 • Operating Hours: 11:00~14:00



• Reservation: Iwakuni Tourist Association Ukai office
 • TEL: 0827-28-2877

1. Gokanjin shrine 5. Houshinji Temple 9. Koufukuji Temple
 2. Tousenji Temple 6. Honnouji Temple 10. Chokyuji Temple
 3. Youkouji Temple 7. Zuisouji Temple 11. Myokakuji Temple
 4. Shinkouji Temple 8. Saifukuji Temple

Cherry Tree Peony Azalea Japanese wisteria Iris

11. Uno Chiyo Birthplace 4. Iwakuni City Visitors Center "HONKE MATSUGANE" 1. Iwakuni White Snake Museum 7. Iwakuni Castle
 10. Teppoukouji St. 5. Ougi-machi 6. Tera-machi 7. Uo-machi 8. Yanai-machi 9. Toufu-machi 10. Kajiya-machi 11. Daimyokouji St. 12. Kikkawa Clan Cemetery 13. Kikkawa Historical Museum 14. Kikkawa Peony Garden 15. Kikkawa Choukoku Museum 16. Kikkawa tearoom 17. Kikkawa Shrine 18. Kikkawa Iris Garden 19. Kikkawa Park 20. Kikkawa Shrine 21. Kikkawa Pavilion 22. Kikkawa Shrine 23. Kikkawa Shrine 24. Kikkawa Shrine 25. Kikkawa Shrine 26. Kikkawa Shrine 27. Kikkawa Shrine 28. Kikkawa Shrine 29. Kikkawa Shrine 30. Kikkawa Shrine 31. Kikkawa Shrine 32. Kikkawa Shrine 33. Kikkawa Shrine 34. Kikkawa Shrine 35. Kikkawa Shrine 36. Kikkawa Shrine 37. Kikkawa Shrine 38. Kikkawa Shrine 39. Kikkawa Shrine 40. Kikkawa Shrine 41. Kikkawa Shrine 42. Kikkawa Shrine 43. Kikkawa Shrine 44. Kikkawa Shrine 45. Kikkawa Shrine 46. Kikkawa Shrine 47. Kikkawa Shrine 48. Kikkawa Shrine 49. Kikkawa Shrine 50. Kikkawa Shrine 51. Kikkawa Shrine 52. Kikkawa Shrine 53. Kikkawa Shrine 54. Kikkawa Shrine 55. Kikkawa Shrine 56. Kikkawa Shrine 57. Kikkawa Shrine 58. Kikkawa Shrine 59. Kikkawa Shrine 60. Kikkawa Shrine 61. Kikkawa Shrine 62. Kikkawa Shrine 63. Kikkawa Shrine 64. Kikkawa Shrine 65. Kikkawa Shrine 66. Kikkawa Shrine 67. Kikkawa Shrine 68. Kikkawa Shrine 69. Kikkawa Shrine 70. Kikkawa Shrine 71. Kikkawa Shrine 72. Kikkawa Shrine 73. Kikkawa Shrine 74. Kikkawa Shrine 75. Kikkawa Shrine 76. Kikkawa Shrine 77. Kikkawa Shrine 78. Kikkawa Shrine 79. Kikkawa Shrine 80. Kikkawa Shrine 81. Kikkawa Shrine 82. Kikkawa Shrine 83. Kikkawa Shrine 84. Kikkawa Shrine 85. Kikkawa Shrine 86. Kikkawa Shrine 87. Kikkawa Shrine 88. Kikkawa Shrine 89. Kikkawa Shrine 90. Kikkawa Shrine 91. Kikkawa Shrine 92. Kikkawa Shrine 93. Kikkawa Shrine 94. Kikkawa Shrine 95. Kikkawa Shrine 96. Kikkawa Shrine 97. Kikkawa Shrine 98. Kikkawa Shrine 99. Kikkawa Shrine 100. Kikkawa Shrine 101. Kikkawa Shrine 102. Kikkawa Shrine 103. Kikkawa Shrine 104. Kikkawa Shrine 105. Kikkawa Shrine 106. Kikkawa Shrine 107. Kikkawa Shrine 108. Kikkawa Shrine 109. Kikkawa Shrine 110. Kikkawa Shrine 111. Kikkawa Shrine 112. Kikkawa Shrine 113. Kikkawa Shrine 114. Kikkawa Shrine 115. Kikkawa Shrine 116. Kikkawa Shrine 117. Kikkawa Shrine 118. Kikkawa Shrine 119. Kikkawa Shrine 120. Kikkawa Shrine 121. Kikkawa Shrine 122. Kikkawa Shrine 123. Kikkawa Shrine 124. Kikkawa Shrine 125. Kikkawa Shrine 126. Kikkawa Shrine 127. Kikkawa Shrine 128. Kikkawa Shrine 129. Kikkawa Shrine 130. Kikkawa Shrine 131. Kikkawa Shrine 132. Kikkawa Shrine 133. Kikkawa Shrine 134. Kikkawa Shrine 135. Kikkawa Shrine 136. Kikkawa Shrine 137. Kikkawa Shrine 138. Kikkawa Shrine 139. Kikkawa Shrine 140. Kikkawa Shrine 141. Kikkawa Shrine 142. Kikkawa Shrine 143. Kikkawa Shrine 144. Kikkawa Shrine 145. Kikkawa Shrine 146. Kikkawa Shrine 147. Kikkawa Shrine 148. Kikkawa Shrine 149. Kikkawa Shrine 150. Kikkawa Shrine 151. Kikkawa Shrine 152. Kikkawa Shrine 153. Kikkawa Shrine 154. Kikkawa Shrine 155. Kikkawa Shrine 156. Kikkawa Shrine 157. Kikkawa Shrine 158. Kikkawa Shrine 159. Kikkawa Shrine 160. Kikkawa Shrine 161. Kikkawa Shrine 162. Kikkawa Shrine 163. Kikkawa Shrine 164. Kikkawa Shrine 165. Kikkawa Shrine 166. Kikkawa Shrine 167. Kikkawa Shrine 168. Kikkawa Shrine 169. Kikkawa Shrine 170. Kikkawa Shrine 171. Kikkawa Shrine 172. Kikkawa Shrine 173. Kikkawa Shrine 174. Kikkawa Shrine 175. Kikkawa Shrine 176. Kikkawa Shrine 177. Kikkawa Shrine 178. Kikkawa Shrine 179. Kikkawa Shrine 180. Kikkawa Shrine 181. Kikkawa Shrine 182. Kikkawa Shrine 183. Kikkawa Shrine 184. Kikkawa Shrine 185. Kikkawa Shrine 186. Kikkawa Shrine 187. Kikkawa Shrine 188. Kikkawa Shrine 189. Kikkawa Shrine 190. Kikkawa Shrine 191. Kikkawa Shrine 192. Kikkawa Shrine 193. Kikkawa Shrine 194. Kikkawa Shrine 195. Kikkawa Shrine 196. Kikkawa Shrine 197. Kikkawa Shrine 198. Kikkawa Shrine 199. Kikkawa Shrine 200. Kikkawa Shrine 201. Kikkawa Shrine 202. Kikkawa Shrine 203. Kikkawa Shrine 204. Kikkawa Shrine 205. Kikkawa Shrine 206. Kikkawa Shrine 207. Kikkawa Shrine 208. Kikkawa Shrine 209. Kikkawa Shrine 210. Kikkawa Shrine 211. Kikkawa Shrine 212. Kikkawa Shrine 213. Kikkawa Shrine 214. Kikkawa Shrine 215. Kikkawa Shrine 216. Kikkawa Shrine 217. Kikkawa Shrine 218. Kikkawa Shrine 219. Kikkawa Shrine 220. Kikkawa Shrine 221. Kikkawa Shrine 222. Kikkawa Shrine 223. Kikkawa Shrine 224. Kikkawa Shrine 225. Kikkawa Shrine 226. Kikkawa Shrine 227. Kikkawa Shrine 228. Kikkawa Shrine 229. Kikkawa Shrine 230. Kikkawa Shrine 231. Kikkawa Shrine 232. Kikkawa Shrine 233. Kikkawa Shrine 234. Kikkawa Shrine 235. Kikkawa Shrine 236. Kikkawa Shrine 237. Kikkawa Shrine 238. Kikkawa Shrine 239. Kikkawa Shrine 240. Kikkawa Shrine 241. Kikkawa Shrine 242. Kikkawa Shrine 243. Kikkawa Shrine 244. Kikkawa Shrine 245. Kikkawa Shrine 246. Kikkawa Shrine 247. Kikkawa Shrine 248. Kikkawa Shrine 249. Kikkawa Shrine 250. Kikkawa Shrine 251. Kikkawa Shrine 252. Kikkawa Shrine 253. Kikkawa Shrine 254. Kikkawa Shrine 255. Kikkawa Shrine 256. Kikkawa Shrine 257. Kikkawa Shrine 258. Kikkawa Shrine 259. Kikkawa Shrine 260. Kikkawa Shrine 261. Kikkawa Shrine 262. Kikkawa Shrine 263. Kikkawa Shrine 264. Kikkawa Shrine 265. Kikkawa Shrine 266. Kikkawa Shrine 267. Kikkawa Shrine 268. Kikkawa Shrine 269. Kikkawa Shrine 270. Kikkawa Shrine 271. Kikkawa Shrine 272. Kikkawa Shrine 273. Kikkawa Shrine 274. Kikkawa Shrine 275. Kikkawa Shrine 276. Kikkawa Shrine 277. Kikkawa Shrine 278. Kikkawa Shrine 279. Kikkawa Shrine 280. Kikkawa Shrine 281. Kikkawa Shrine 282. Kikkawa Shrine 283. Kikkawa Shrine 284. Kikkawa Shrine 285. Kikkawa Shrine 286. Kikkawa Shrine 287. Kikkawa Shrine 288. Kikkawa Shrine 289. Kikkawa Shrine 290. Kikkawa Shrine 291. Kikkawa Shrine 292. Kikkawa Shrine 293. Kikkawa Shrine 294. Kikkawa Shrine 295. Kikkawa Shrine 296. Kikkawa Shrine 297. Kikkawa Shrine 298. Kikkawa Shrine 299. Kikkawa Shrine 300. Kikkawa Shrine 301. Kikkawa Shrine 302. Kikkawa Shrine 303. Kikkawa Shrine 304. Kikkawa Shrine 305. Kikkawa Shrine 306. Kikkawa Shrine 307. Kikkawa Shrine 308. Kikkawa Shrine 309. Kikkawa Shrine 310. Kikkawa Shrine 311. Kikkawa Shrine 312. Kikkawa Shrine 313. Kikkawa Shrine 314. Kikkawa Shrine 315. Kikkawa Shrine 316. Kikkawa Shrine 317. Kikkawa Shrine 318. Kikkawa Shrine 319. Kikkawa Shrine 320. Kikkawa Shrine 321. Kikkawa Shrine 322. Kikkawa Shrine 323. Kikkawa Shrine 324. Kikkawa Shrine 325. Kikkawa Shrine 326. Kikkawa Shrine 327. Kikkawa Shrine 328. Kikkawa Shrine 329. Kikkawa Shrine 330. Kikkawa Shrine 331. Kikkawa Shrine 332. Kikkawa Shrine 333. Kikkawa Shrine 334. Kikkawa Shrine 335. Kikkawa Shrine 336. Kikkawa Shrine 337. Kikkawa Shrine 338. Kikkawa Shrine 339. Kikkawa Shrine 340. Kikkawa Shrine 341. Kikkawa Shrine 342. Kikkawa Shrine 343. Kikkawa Shrine 344. Kikkawa Shrine 345. Kikkawa Shrine 346. Kikkawa Shrine 347. Kikkawa Shrine 348. Kikkawa Shrine 349. Kikkawa Shrine 350. Kikkawa Shrine 351. Kikkawa Shrine 352. Kikkawa Shrine 353. Kikkawa Shrine 354. Kikkawa Shrine 355. Kikkawa Shrine 356. Kikkawa Shrine 357. Kikkawa Shrine 358. Kikkawa Shrine 359. Kikkawa Shrine 360. Kikkawa Shrine 361. Kikkawa Shrine 362. Kikkawa Shrine 363. Kikkawa Shrine 364. Kikkawa Shrine 365. Kikkawa Shrine 366. Kikkawa Shrine 367. Kikkawa Shrine 368. Kikkawa Shrine 369. Kikkawa Shrine 370. Kikkawa Shrine 371. Kikkawa Shrine 372. Kikkawa Shrine 373. Kikkawa Shrine 374. Kikkawa Shrine 375. Kikkawa Shrine 376. Kikkawa Shrine 377. Kikkawa Shrine 378. Kikkawa Shrine 379. Kikkawa Shrine 380. Kikkawa Shrine 381. Kikkawa Shrine 382. Kikkawa Shrine 383. Kikkawa Shrine 384. Kikkawa Shrine 385. Kikkawa Shrine 386. Kikkawa Shrine 387. Kikkawa Shrine 388. Kikkawa Shrine 389. Kikkawa Shrine 390. Kikkawa Shrine 391. Kikkawa Shrine 392. Kikkawa Shrine 393. Kikkawa Shrine 394. Kikkawa Shrine 395. Kikkawa Shrine 396. Kikkawa Shrine 397. Kikkawa Shrine 398. Kikkawa Shrine 399. Kikkawa Shrine 400. Kikkawa Shrine 401. Kikkawa Shrine 402. Kikkawa Shrine 403. Kikkawa Shrine 404. Kikkawa Shrine 405. Kikkawa Shrine 406. Kikkawa Shrine 407. Kikkawa Shrine 408. Kikkawa Shrine 409. Kikkawa Shrine 410. Kikkawa Shrine 411. Kikkawa Shrine 412. Kikkawa Shrine 413. Kikkawa Shrine 414. Kikkawa Shrine 415. Kikkawa Shrine 416. Kikkawa Shrine 417. Kikkawa Shrine 418. Kikkawa Shrine 419. Kikkawa Shrine 420. Kikkawa Shrine 421. Kikkawa Shrine 422. Kikkawa Shrine 423. Kikkawa Shrine 424. Kikkawa Shrine 425. Kikkawa Shrine 426. Kikkawa Shrine 427. Kikkawa Shrine 428. Kikkawa Shrine 429. Kikkawa Shrine 430. Kikkawa Shrine 431. Kikkawa Shrine 432. Kikkawa Shrine 433. Kikkawa Shrine 434. Kikkawa Shrine 435. Kikkawa Shrine 436. Kikkawa Shrine 437. Kikkawa Shrine 438. Kikkawa Shrine 439. Kikkawa Shrine 440. Kikkawa Shrine 441. Kikkawa Shrine 442. Kikkawa Shrine 443. Kikkawa Shrine 444. Kikkawa Shrine 445. Kikkawa Shrine 446. Kikkawa Shrine 447. Kikkawa Shrine 448. Kikkawa Shrine 449. Kikkawa Shrine 450. Kikkawa Shrine 451. Kikkawa Shrine 452. Kikkawa Shrine 453. Kikkawa Shrine 454. Kikkawa Shrine 455. Kikkawa Shrine 456. Kikkawa Shrine 457. Kikkawa Shrine 458. Kikkawa Shrine 459. Kikkawa Shrine 460. Kikkawa Shrine 461. Kikkawa Shrine 462. Kikkawa Shrine 463. Kikkawa Shrine 464. Kikkawa Shrine 465. Kikkawa Shrine 466. Kikkawa Shrine 467. Kikkawa Shrine 468. Kikkawa Shrine 469. Kikkawa Shrine 470. Kikkawa Shrine 471. Kikkawa Shrine 472. Kikkawa Shrine 473. Kikkawa Shrine 474. Kikkawa Shrine 475. Kikkawa Shrine 476. Kikkawa Shrine 477. Kikkawa Shrine 478. Kikkawa Shrine 479. Kikkawa Shrine 480. Kikkawa Shrine 481. Kikkawa Shrine 482. Kikkawa Shrine 483. Kikkawa Shrine 484. Kikkawa Shrine 485. Kikkawa Shrine 486. Kikkawa Shrine 487. Kikkawa Shrine 488. Kikkawa Shrine 489. Kikkawa Shrine 490. Kikkawa Shrine 491. Kikkawa Shrine 492. Kikkawa Shrine 493. Kikkawa Shrine 494. Kikkawa Shrine 495. Kikkawa Shrine 496. Kikkawa Shrine 497. Kikkawa Shrine 498. Kikkawa Shrine 499. Kikkawa Shrine 500. Kikkawa Shrine 501. Kikkawa Shrine 502. Kikkawa Shrine 503. Kikkawa Shrine 504. Kikkawa Shrine 505. Kikkawa Shrine 506. Kikkawa Shrine 507. Kikkawa Shrine 508. Kikkawa Shrine 509. Kikkawa Shrine 510. Kikkawa Shrine 511. Kikkawa Shrine 512. Kikkawa Shrine 513. Kikkawa Shrine 514. Kikkawa Shrine 515. Kikkawa Shrine 516. Kikkawa Shrine 517. Kikkawa Shrine 518. Kikkawa Shrine 519. Kikkawa Shrine 520. Kikkawa Shrine 521. Kikkawa Shrine 522. Kikkawa Shrine 523. Kikkawa Shrine 524. Kikkawa Shrine 525. Kikkawa Shrine 526. Kikkawa Shrine 527. Kikkawa Shrine 528. Kikkawa Shrine 529. Kikkawa Shrine 530. Kikkawa Shrine 531. Kikkawa Shrine 532. Kikkawa Shrine 533. Kikkawa Shrine 534. Kikkawa Shrine 535. Kikkawa Shrine 536. Kikkawa Shrine 537. Kikkawa Shrine 538. Kikkawa Shrine 539. Kikkawa Shrine 540. Kikkawa Shrine 541. Kikkawa Shrine 542. Kikkawa Shrine 543. Kikkawa Shrine 544. Kikkawa Shrine 545. Kikkawa Shrine 546. Kikkawa Shrine 547. Kikkawa Shrine 548. Kikkawa Shrine 549. Kikkawa Shrine 550. Kikkawa Shrine 551. Kikkawa Shrine 552. Kikkawa Shrine 553. Kikkawa Shrine 554. Kikkawa Shrine 555. Kikkawa Shrine 556. Kikkawa Shrine 557. Kikkawa Shrine 558. Kikkawa Shrine 559. Kikkawa Shrine 560. Kikkawa Shrine 561. Kikkawa Shrine 562. Kikkawa Shrine 563. Kikkawa Shrine 564. Kikkawa Shrine 565. Kikkawa Shrine 566. Kikkawa Shrine 567. Kikkawa Shrine 568. Kikkawa Shrine 569. Kikkawa Shrine 570. Kikkawa Shrine 571. Kikkawa Shrine 572. Kikkawa Shrine 573. Kikkawa Shrine 574. Kikkawa Shrine 575. Kikkawa Shrine 576. Kikkawa Shrine 577. Kikkawa Shrine 578. Kikkawa Shrine 579. Kikkawa Shrine 580. Kikkawa Shrine 581. Kikkawa Shrine 582. Kikkawa Shrine 583. Kikkawa Shrine 584. Kikkawa Shrine 585. Kikkawa Shrine 586. Kikkawa Shrine 587. Kikkawa Shrine 588. Kikkawa Shrine 589. Kikkawa Shrine 590. Kikkawa Shrine 591. Kikkawa Shrine 592. Kikkawa Shrine 593. Kikkawa Shrine 594. Kikkawa Shrine 595. Kikkawa Shrine 596. Kikkawa Shrine 597. Kikkawa Shrine 598. Kikkawa Shrine 599. Kikkawa Shrine 600. Kikkawa Shrine 601. Kikkawa Shrine 602. Kikkawa Shrine 603. Kikkawa Shrine 604. Kikkawa Shrine 605. Kikkawa Shrine 606. Kikkawa Shrine 607. Kikkawa Shrine 608. Kikkawa Shrine 609. Kikkawa Shrine 610. Kikkawa Shrine 611. Kikkawa Shrine 612. Kikkawa Shrine 613. Kikkawa Shrine 614. Kikkawa Shrine 615. Kikkawa Shrine 616. Kikkawa Shrine 617. Kikkawa Shrine 618. Kikkawa Shrine 619. Kikkawa Shrine 620. Kikkawa Shrine 621. Kikkawa Shrine 622. Kikkawa Shrine 623. Kikkawa Shrine 624. Kikkawa Shrine 625. Kikkawa Shrine 626. Kikkawa Shrine 627. Kikkawa Shrine 628. Kikkawa Shrine 629. Kikkawa Shrine 630. Kikkawa Shrine 631. Kikkawa Shrine 632. Kikkawa Shrine 633. Kikkawa Shrine 634. Kikkawa Shrine 635. Kikkawa Shrine 636. Kikkawa Shrine 637. Kikkawa Shrine 638. Kikkawa Shrine 639. Kikkawa Shrine 640. Kikkawa Shrine 641. Kikkawa Shrine 642. Kikkawa Shrine 643. Kikkawa Shrine 644. Kikkawa Shrine 645. Kikkawa Shrine 646. Kikkawa Shrine 647. Kikkawa Shrine 648. Kikkawa Shrine 649. Kikkawa Shrine 650. Kikkawa Shrine 651. Kikkawa Shrine 652. Kikkawa Shrine 653. Kikkawa Shrine 654. Kikkawa Shrine 655. Kikkawa Shrine 656. Kikkawa Shrine 657. Kikkawa Shrine 658. Kikkawa Shrine 659. Kikkawa Shrine 660. Kikkawa Shrine 661. Kikkawa Shrine 662. Kikkawa Shrine 663. Kikkawa Shrine 664. Kikkawa Shrine 665. Kikkawa Shrine 666. Kikkawa Shrine 667. Kikkawa Shrine 668. Kikkawa Shrine 669. Kikkawa Shrine 670. Kikkawa Shrine 671. Kikkawa Shrine 672. Kikkawa Shrine 673. Kikkawa Shrine 674. Kikkawa Shrine 675. Kikkawa Shrine 676. Kikkawa Shrine 677. Kikkawa Shrine 678. Kikkawa Shrine 679. Kikkawa Shrine 680. Kikkawa Shrine 681. Kikkawa Shrine 682. Kikkawa Shrine 683. Kikkawa Shrine 684. Kikkawa Shrine 685. Kikkawa Shrine 686. Kikkawa Shrine 687. Kikkawa Shrine 688. Kikkawa Shrine 689. Kikkawa Shrine 690. Kikkawa Shrine 691. Kikkawa Shrine 692. Kikkawa Shrine 693. Kikkawa Shrine 694. Kikkawa Shrine 695. Kikkawa Shrine 696. Kikkawa Shrine 697. Kikkawa Shrine 698. Kikkawa Shrine 699. Kikkawa Shrine 700. Kikkawa Shrine 701. Kikkawa Shrine 702. Kikkawa Shrine 703. Kikkawa Shrine 704. Kikkawa Shrine 705. Kikkawa Shrine 706. Kikkawa Shrine 707. Kikkawa Shrine 708. Kikkawa Shrine 709. Kikkawa Shrine 710. Kikkawa Shrine 711. Kikkawa Shrine 712. Kikkawa Shrine 713. Kikkawa Shrine 714. Kikkawa Shrine 715. Kikkawa Shrine 716. Kikkawa Shrine 717. Kikkawa Shrine 718. Kikkawa Shrine 719. Kikkawa Shrine 720. Kikkawa Shrine 721. Kikkawa Shrine 722. Kikkawa Shrine 723. Kikkawa Shrine 724. Kikkawa Shrine 725. Kikkawa Shrine 726. Kikkawa Shrine 727. Kikkawa Shrine 728. Kikkawa Shrine 729. Kikkawa Shrine 730. Kikkawa Shrine 731. Kikkawa Shrine 732. Kikkawa Shrine 733. Kikkawa Shrine 734. Kikkawa Shrine 735. Kikkawa Shrine 736. Kikkawa Shrine 737. Kikkawa Shrine 738. Kikkawa Shrine 739. Kikkawa Shrine 740. Kikkawa Shrine 741. Kikkawa Shrine 742. Kikkawa Shrine 743. Kikkawa Shrine 744. Kikkawa Shrine 745. Kikkawa Shrine 746. Kikkawa Shrine 747. Kikkawa Shrine 748. Kikkawa Shrine 749. Kikkawa Shrine 750. Kikkawa Shrine 751. Kikkawa Shrine 752. Kikkawa Shrine 753. Kikkawa Shrine 754. Kikkawa Shrine 755. Kikkawa Shrine 756. Kikkawa Shrine 757. Kikkawa Shrine 758. Kikkawa Shrine 759. Kikkawa Shrine 760. Kikkawa Shrine 761. Kikkawa Shrine 762. Kikkawa Shrine 763. Kikkawa Shrine 764. Kikkawa Shrine 765. Kikkawa Shrine 766. Kikkawa Shrine 767. Kikkawa Shrine 768. Kikkawa Shrine 769. Kikkawa Shrine 770. Kikkawa Shrine 771. Kikkawa Shrine 772. Kikkawa Shrine 773. Kikkawa Shrine 774. Kikkawa Shrine 775. Kikkawa Shrine 776. Kikkawa Shrine 777. Kikkawa Shrine 778. Kikkawa Shrine 779. Kikkawa Shrine 780. Kikkawa Shrine 781. Kikkawa Shrine 782. Kikkawa Shrine 783. Kikkawa Shrine 784. Kikkawa Shrine 785. Kikkawa Shrine 786. Kikkawa Shrine 787. Kikkawa Shrine 788. Kikkawa Shrine 789. Kikkawa Shrine 790. Kikkawa Shrine 791. Kikkawa Shrine 792. Kikkawa Shrine 793. Kikkawa Shrine 794. Kikkawa Shrine 795. Kikkawa Shrine 796. Kikkawa Shrine 797. Kikkawa Shrine 798. Kikkawa Shrine 799. Kikkawa Shrine 800. Kikkawa Shrine 801. Kikkawa Shrine 802. Kikkawa Shrine 803. Kikkawa Shrine 804. Kikkawa Shrine 805. Kikkawa Shrine 806. Kikkawa Shrine 807. Kikkawa Shrine 808. Kikkawa Shrine 809. Kikkawa Shrine 810. Kikkawa Shrine 811. Kikkawa Shrine 812. Kikkawa Shrine 813. Kikkawa Shrine 814. Kikkawa Shrine 815. Kikkawa Shrine 816. Kikkawa Shrine 817. Kikkawa Shrine 818. Kikkawa Shrine 819. Kikkawa Shrine 820. Kikkawa Shrine 821. Kikkawa Shrine 822. Kikkawa Shrine 823. Kikkawa Shrine 824. Kikkawa Shrine 825. Kikkawa Shrine 826. Kikkawa Shrine 827. Kikkawa Shrine 828. Kikkawa Shrine 829. Kikkawa Shrine 830. Kikkawa Shrine 831. Kikkawa Shrine 832. Kikkawa Shrine 833. Kikkawa Shrine 834. Kikkawa Shrine 835. Kikkawa Shrine 836. Kikkawa Shrine 837. Kikkawa Shrine 838. Kikkawa Shrine 839. Kikkawa Shrine 840. Kikkawa Shrine 841. Kikkawa Shrine 842. Kikkawa Shrine 843. Kikkawa Shrine 844. Kikkawa Shrine 845. Kikkawa Shrine 846. Kikkawa Shrine 847. Kikkawa Shrine 848. Kikkawa Shrine 849. Kikkawa Shrine 850. Kikkawa Shrine 851. Kikkawa Shrine 852. Kikkawa Shrine 853. Kikkawa Shrine 854. Kikkawa Shrine 855. Kikkawa Shrine 856. Kikkawa Shrine 857. Kikkawa Shrine 858. Kikkawa Shrine 859. Kikkawa Shrine 860. Kikkawa Shrine 861. Kikkawa Shrine 862. Kikkawa Shrine 863. Kikkawa Shrine 864. Kikkawa Shrine 865. Kikkawa Shrine 866. Kikkawa Shrine 867. Kikkawa Shrine 868. Kikkawa Shrine 869. Kikkawa Shrine 870. Kikkawa Shrine 871. Kikkawa Shrine 872. Kikkawa Shrine 873. Kikkawa Shrine 874. Kikkawa Shrine 875. Kikkawa Shrine 876. Kikkawa Shrine 877. Kikkawa Shrine 878. Kikkawa Shrine 879. Kikkawa Shrine 880. Kikkawa Shrine 881. Kikkawa Shrine 882. Kikkawa Shrine 883. Kikkawa Shrine 884. Kikkawa Shrine 885. Kikkawa Shrine 886. Kikkawa Shrine 887. Kikkawa Shrine 888. Kikkawa Shrine 889. Kikkawa Shrine 890. Kikkawa Shrine 891. Kikkawa Shrine 892. Kikkawa Shrine 893. Kikkawa Shrine 894. Kikkawa Shrine 895. Kikkawa Shrine 896. Kikkawa Shrine 897. Kikkawa Shrine 898. Kikkawa Shrine 899. Kikkawa Shrine 900. Kikkawa Shrine 901. Kikkawa Shrine 902. Kikkawa Shrine 903. Kikkawa Shrine 904. Kikkawa Shrine 905. Kikkawa Shrine 906. Kikkawa Shrine 907. Kikkawa Shrine 908. Kikkawa Shrine 909. Kikkawa Shrine 910. Kikkawa Shrine 911. Kikkawa Shrine 912. Kikkawa Shrine 913. Kikkawa Shrine 914. Kikkawa Shrine 915. Kikkawa Shrine 916. Kikkawa Shrine 917. Kikkawa Shrine 918. Kikkawa Shrine 919. Kikkawa Shrine 920. Kikkawa Shrine 921. Kikkawa Shrine 922. Kikkawa Shrine 923. Kikkawa Shrine 924. Kikkawa Shrine 925. Kikkawa Shrine 926. Kikkawa Shrine 927. Kikkawa Shrine 928. Kikkawa Shrine 929. Kikkawa Shrine 930. Kikkawa Shrine 931. Kikkawa Shrine 932. Kikkawa Shrine 933. Kikkawa Shrine 934. Kikkawa Shrine 935. Kikkawa Shrine 936. Kikkawa Shrine 937. Kikkawa Shrine 938. Kikkawa Shrine 939. Kikkawa Shrine 940. Kikkawa Shrine 941. Kikkawa Shrine 942. Kikkawa Shrine 943. Kikkawa Shrine 944. Kikkawa Shrine 945. Kikkawa Shrine 946. Kikkawa Shrine 947. Kikkawa Shrine 948. Kikkawa Shrine 949. Kikkawa Shrine 950. Kikkawa Shrine 951. Kikkawa Shrine 952. Kikkawa Shrine 953. Kikkawa Shrine 954. Kikkawa Shrine 955. Kikkawa Shrine 956. Kikkawa Shrine 957. Kikkawa Shrine 958. Kikkawa Shrine 959. Kikkawa Shrine 960. Kikkawa Shrine 961. Kikkawa Shrine 962. Kikkawa Shrine 963. Kikkawa Shrine 964. Kikkawa Shrine 965. Kikkawa Shrine 966. Kikkawa Shrine 967. Kikkawa Shrine 968. Kikkawa Shrine 969. Kikkawa Shrine 970. Kikkawa Shrine 971. Kikkawa Shrine 972. Kikkawa Shrine 973. Kikkawa Shrine 974. Kikkawa Shrine 975. Kikkawa Shrine 976. Kikkawa Shrine 977. Kikkawa Shrine 978. Kikkawa Shrine 979. Kikkawa Shrine 980. Kikkawa Shrine 981. Kikkawa Shrine 982. Kikkawa Shrine 983. Kikkawa Shrine 984. Kikkawa Shrine 985. Kikkawa Shrine 986. Kikkawa Shrine 987. Kikkawa Shrine 988. Kikkawa Shrine 989. Kikkawa Shrine 990. Kikkawa Shrine 991. Kikkawa Shrine 992. Kikkawa Shrine 993. Kikkawa Shrine 994. Kikkawa Shrine 995. Kikkawa Shrine 996. Kikkawa Shrine 997. Kikkawa Shrine 998. Kikkawa Shrine 999. Kikkawa Shrine 1000. Kikkawa Shrine 1001. Kikkawa Shrine 1002. Kikkawa Shrine 1003. Kikkawa Shrine 1004. Kikkawa Shrine 1005. Kikkawa Shrine 1006. Kikkawa Shrine 1007. Kikkawa Shrine 1008. Kikkawa Shrine 1009. Kikkawa Shrine 1010. Kikkawa Shrine 1011. Kikkawa Shrine 1012. Kikkawa Shrine 1013. Kikkawa Shrine 1014. Kikkawa Shrine 1015. Kikkawa Shrine 1016. Kikkawa Shrine 1017. Kikkawa Shrine 1018. Kikkawa Shrine 1019. Kikkawa Shrine 1020. Kikkawa Shrine 1021. Kikkawa Shrine 1022. Kikkawa Shrine 1023. Kikkawa Shrine 1024. Kikkawa Shrine 1025. Kikkawa Shrine 1026. Kikkawa Shrine 1027. Kikkawa Shrine 1028. Kikkawa Shrine 1029. Kikkawa Shrine 1030. Kikkawa Shrine 1031. Kikkawa Shrine 1032. Kikkawa Shrine 1033. Kikkawa Shrine 1034. Kikkawa Shrine 1035. Kikkawa Shrine 1036. Kikkawa Shrine 1037. Kikkawa Shrine 1038. Kikkawa Shrine 1039. Kikkawa Shrine 1040. Kikkawa Shrine 1041. Kikkawa Shrine 1042. Kikkawa Shrine 1043. Kikkawa Shrine 1044. Kikkawa Shrine 1045. Kikkawa Shrine 1046. Kikkawa Shrine 1047. Kikkawa Shrine 1048. Kikkawa Shrine 1049. Kikkawa Shrine 1050. Kikkawa Shrine 1051. Kikkawa Shrine 1052. Kikkawa Shrine 1053. Kikkawa Shrine 1054. Kikkawa Shrine 1055. Kikkawa Shrine 1056. Kikkawa Shrine 1057. Kikkawa Shrine 1058. Kikkawa Shrine 1059. Kikkawa Shrine 1060. Kikkawa Shrine 1061. Kikkawa Shrine 1062. Kikkawa Shrine 1063. Kikkawa Shrine 1064. Kikkawa Shrine 1065. Kikkawa Shrine 1066. Kikkawa Shrine 1067. Kikkawa Shrine 1068. Kikkawa Shrine 1069. Kikkawa Shrine 1070. Kikkawa Shrine 1071. Kikkawa Shrine 1072. Kikkawa Shrine 1073. Kikkawa Shrine 1074. Kikkawa Shrine 1075. Kikkawa Shrine 1076. Kikkawa Shrine 1077. Kikkawa Shrine 1078. Kikkawa Shrine 1079. Kikkawa Shrine 1080. Kikkawa Shrine 1081. Kikkawa Shrine 1082. Kikkawa Shrine 1083. Kikkawa Shrine 1084. Kikkawa Shrine 1085. Kikkawa Shrine 1086. Kikkawa Shrine 1087. Kikkawa Shrine 1088. Kikkawa Shrine 1089. Kikkawa Shrine 1090. Kikkawa Shrine 1091. Kikkawa Shrine 1092. Kikkawa Shrine 1093. Kikkawa Shrine 1094. Kikkawa Shrine 1095. Kikkawa Shrine 1096. Kikkawa Shrine 1097. Kikkawa Shrine 1098. Kikkawa Shrine 1099. Kikkawa Shrine 1100. Kikkawa Shrine 1101. Kikkawa Shrine 1102. Kikkawa Shrine 1103. Kikkawa Shrine 1104. Kikkawa Shrine 1105. Kikkawa Shrine 1106. Kikkawa Shrine 1107. Kikkawa Shrine 1108. Kikkawa Shrine 1109. Kikkawa Shrine 1110. Kikkawa Shrine 1111. Kikkawa Shrine 1112. Kikkawa Shrine 1113. Kikkawa Shrine 1114. Kikkawa Shrine 1115. Kikkawa Shrine 1116. Kikkawa Shrine 1117. Kikkawa Shrine 1118. Kikkawa Shrine 1119. Kikkawa Shrine 1120. Kikkawa Shrine 1121. Kikkawa Shrine 1122. Kikkawa Shrine 1123. Kikkawa Shrine 1124. Kikkawa Shrine 1125. Kikkawa Shrine 1126. Kikkawa Shrine 1127. Kikkawa Shrine 1128. Kikkawa Shrine 1129. Kikkawa Shrine 1130. Kikkawa Shrine 1131. Kikkawa



Let's Experience!

Iwakuni City Visitors Center "HONKE MATSUGANE" 4 MAP:P2



- Hours: 9:00~17:00 (entrance closes at 15:30)
- Open: all-year-round
- Address: 1-7-3 Iwakuni, Iwakuni City
- TEL: 0827-28-6600



Gokyo Bunko Museum 5 MAP:P2

- Hours: 9:00~17:00 (entrance closes at 15:30)
- Closed: Wednesdays (also closed when changing out exhibition)
- Fees: Adult:700yen, college students:500yen, visitors high school age and under are free
- Address: 2-4-32, Yokoyama, Iwakuni City
- TEL: 0827-28-5959

Experience of SAMURAI ARMORS

The building of "Honke Matsugane" is said to be constructed in Edo period around 1850. It was renewed and opened as Iwakuni City Visitors Center in 2017. It is not place for visitors to get information about Iwakuni but also offer a chance to experience SAMURAI ARMORS and taste various kinds of Japanese sake. English-speaking staff is willing to help you to wear the Samurai Armors. You can take commemorative photos in front of Kintaikyo Bridge. The experience is also available for children. The family can have a lot of fun. *Muskets and swords are replica items.



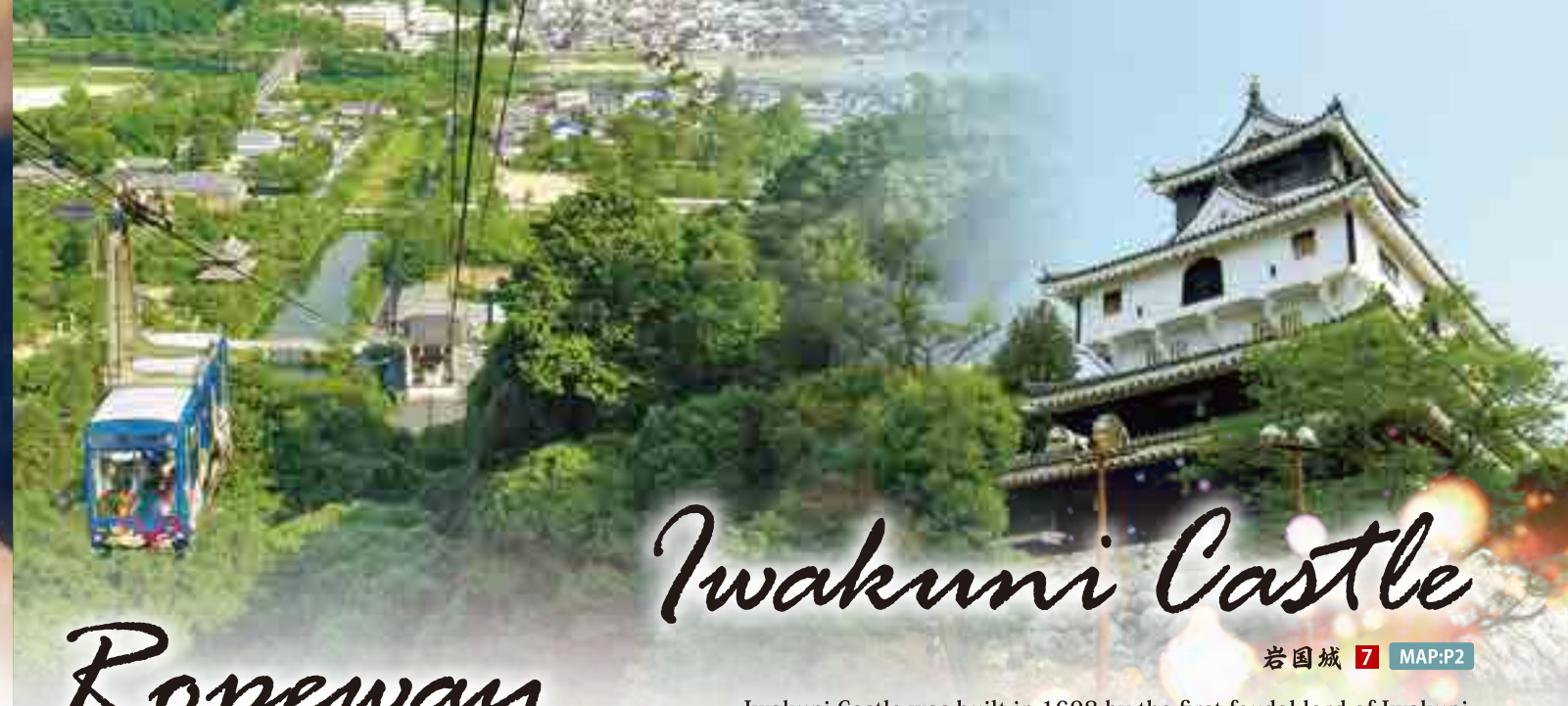
- Reservation: Required in advance
- It takes about 30 mins.
- Experience time: 10:00~16:00 (L.O.15:30) every Saturday and Sunday.
- Please contact as it may change depending on the situation.

Tenkoku Engraving Experience

We are a museum dedicated to displaying works in areas like calligraphy, painting, seal engraving, "the Four Treasures of the Study" (brush, ink, paper, and inkstone), and pottery and porcelain. This is an area where you can participate in a "Tenkoku Engraving Experience" and make your own original stamp by carving kanji (Chinese characters) on the stone.



- Experience fee (includes museum entrance pass): Adult: from 2500 yen, College students: 2200 yen, High school students and under: 2000 yen
- Experience length: 30 minutes or more
- Reservations: Visitors with reservations enter first



Ropeway

ロープウェイ 6 MAP:P2

From Sanroku Station to the top of Mt. Shiroyama (elevation:200m), it takes three minutes by gondola. From the gondola, visitors can enjoy the beautiful view of Kintaikyo Bridge, Iwakuni castle town, the city and the airport. On a clear day, you can even see the islands spread across the Seto Inland Sea.

- Operating Hours: 9:00~17:00 • Fees: Adults:330yen (one-way) 560yen (round-trip) Elementary school students:150yen (one-way) 260yen (round-trip) ※Set Discount Tickets are available for touring Kintaikyo Bridge and Iwakuni Castle.
- Closed on Inspection Days • TEL:0827-41-1477



Soft Ice Cream in Iwakuni

Around Kintaikyo Bridge, there are many Soft ice cream shops. Many tourists visit and enjoy the different flavors of the ice cream.

Sasakiya Kojiro Shop 8 MAP:P2

- Hours:9:00~18:00 ※Closed early in winter
- Closed: No scheduled holidays
- Address: 2-5-32 Yokoyama Iwakuni-City
- TEL:0827-41-3741

Takenosato Musashi 9 MAP:P2

- Hours:9:00~18:00 • Open: all-year-round
- Address: 2-1-23 Yokoyama Iwakuni-City
- TEL:0827-43-6340

Iwakuni Castle

岩国城 7 MAP:P2

Iwakuni Castle was built in 1608 by the first feudal lord of Iwakuni, Hiroie Kikkawa. It was originally located on the top of Mt. Shiroyama (elevation:200m), however, it was demolished after 7 years under the order of Tokugawa Shogunate. The present castle tower was restored in 1962 and now stands facing more towards the east side of the grounds. Iwakuni castle is a threefold, four-story castle built in Momoyama-Nanban-Zukuri style, which refers to a particular architectural style of the era. The swords and armors of the Sengoku period are displayed inside the castle. From the top of the castle, you can enjoy the beautiful view of Iwakuni City and maybe the different islands of Seto Inland Sea on a clear day.

- Hours: 9:00~16:30 • Admission Fees: Adults:270yen Elementary school students:120yen
- ※Set Discount Tickets are available for touring Iwakuni Castle,
- Kintaikyo Bridge and Ropeway. ※Closed on Ropeway Inspection Days
- TEL:0827-41-1477 (Nishikigawa Railway Company Iwakuni Branch)

Iwakuni Sushi MAP:P2

Iwakuni sushi is Iwakuni's own traditional sushi. Many layers of sushi rice and locally harvested lotus roots and fish are pressed in a wooden pressure frame. A large quantity is often made at once and cut with a long knife in pieces when serving. You can enjoy Iwakuni sushi at local restaurants and each restaurant has its own ingredients and flavor of the sushi.



10 Iwakuni White Snake Museum MAP:P2



"White Snakes of Iwakuni" are rare albino snakes whitened by mutation, which are found in Iwakuni. They have ruby red eyes and a shiny white body. They are known as "the messenger of god," thus cherished by the local people for their good luck and fortune. At Iwakuni White Snake Museum, you can see the actual white snakes and learn about them through old documents, skeletal preparation and educational videos. White Snake in Iwakuni is a national natural monument.

- ※ English translation is available at the museum. • Hours: 9:00~17:00 • Open all-year-round
- Fees: Adults:200yen, Children:100yen • TEL:0827-35-5303

11 Uno Chiyo Birthplace MAP:P2



This residence was the birthplace for Iwakuni-born, nationally recognized female novelist, Uno Chiyo. The garden offers an excellent seasonal view with its spring cherry blossoms, fresh greenery, and autumnal colors of leaves.

- Hours: 10:00~16:00 • TEL:0827-43-1693
- Closed: Tuesdays, 14th-16th August and New Year Holidays
- Fees: Adults:310yen, Elementary and Jr. High Students:100yen,
- Address: 2-9-35 Kawanishi Iwakuni-City

12 Kashiwabara Art Museum MAP:P2



This museum is famous for its collection of traditional weapons. The display includes samurai armor, swords, ceramics, glassware, calligraphic works, and the furniture of Iwakuni's feudal lords. 200 pieces are permanently exhibited and others change four times a year.

- Hours: 9:00~17:00 (16:00 from Dec to Feb) • TEL:0827-41-0506
- Fees: Adults:800yen, High school and College students:500yen, Elementary and Jr. High school students:200yen

13 Kikkawa Historical Museum MAP:P2



This museum displays the possessions of the Kikkawa family, which includes old documents, swords, weapons and traditional artifacts. The museum changes its theme and display four times a year.

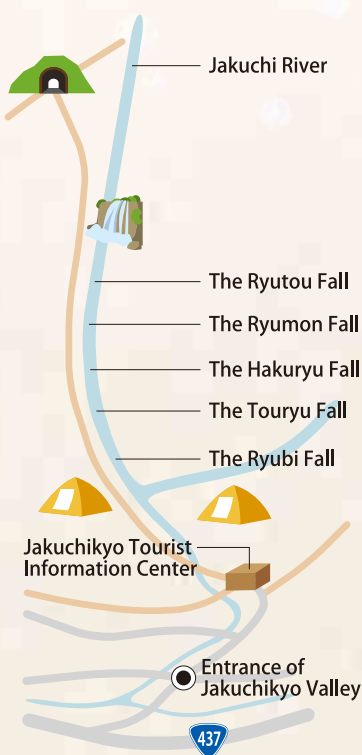
- Open Hours: 9:00~17:00 • TEL:0827-41-1010
- Closed: Wednesdays (If it falls on a national holiday, the next day is closed) and New year Holidays (also closed when changing out exhibition)
- Fees: Adults:500yen, High school and College students:300yen, Elementary school students:200yen

Jakuchikyo Valley 寂地峡

(One of the three biggest valleys in Western Chugoku Mountains Quasi-National Parks) **MAP:P10 B-1**

Jakuchikyo Valley is located along the fresh Jakuchi River in Mt. Jakuchi, the highest mountain in Yamaguchi Prefecture. Five Falls (registered as one of Japan's 100 best waterfalls) and uniquely shaped rocks create a beautiful and rich landscape of the valley. Visitors can refresh their mind and soul by experiencing the sacred atmosphere of the place. Campsite is also available.

Walking Map



The Ryutou Fall The Ryumon Fall The Hakuryu Fall The Touryu Fall The Ryubi Fall

Jakuchikyo Tourist Information Center

The center offers visitors not only tourist information but also a place to buy local products, snacks and drinks. Visitors can register for the campsite as well and enjoy conversation with the local people at the center.

• Open from April to November • Address: 1388 Usa Nishiki-machi Iwakuni-City • TEL: 0827-74-0776



Campsites in Iwakuni

岩国のキャンプ場

Sugawa Kazoku-mura Auto Campsite **MAP:P10 B-1**

Located along the beautiful Usa River. Families can enjoy both camping and playing in the river.

• Address: SugawaNishiki-machi Iwakuni-City • TEL: 0827-73-0123 • CELL: 090-8992-3178 (Accept reservations all year around on cellphone)
• Fees: [Cottage] 6500yen / night [Tent] 3500yen / night • Check-in and Check-out Hours 12:00~11:00 (next day) • Open from May to October

Jakuchikyo Campsite



Located near Five Falls (registered as one of Japan's 100 best waterfalls). Visitors can enjoy the refreshing waterfall air in the mountains.

• Address: 1388 Usa Nishiki-machi Iwakuni-City
• TEL: 0827-74-0776
• Fees:
[Open sites] 1040yen / night
[Deck] 2090yen / night
[Cabin] 10470yen / night (maximum 4 people)
• Check-in and Check-out Hours:
[Open sites and Deck] 15:00~14:00 (next day)
[Cabin] 15:00~12:00 (next day)
• Open from April to November

Rakan-Kougen Auto Campsite



Located on the Rakan highlands (Elevation: above 800m). Visitors enjoy the panoramic view of seasonal changes in nature. Star gazing at night is an excellent choice for visitors.

• Address:
699-5 Rakan Ohara Nishiki-machi Iwakuni-City
• TEL: 0827-74-0010
• Fees:
[Cabin] 7500 yen / night (maximum 4people)
[Auto-camp] from 4500yen / night (maximum 5 people)
• Check-in and Check-out Hours:
[Cabin] 15:00~10:00 (next day)
[Auto-camp] 14:00~12:00 (next day)
• Open from April to November

Yasaka Camp Village



Visitors can experience various kinds of recreational activities in Yasaka Camp Village, such as playing in the river, kayaking on Yasaka Lake, and cycling around the lake.

• Address: 281-2 Yuritani Miwa-machi Iwakuni-City
• Fees:
[Yasaka Campsite] Cabin: 8220yen / night
[Auto-camp] 2050yen / night
[Kawashinjugai Park] 1020yen / night
[Yasaka Auto Campsite] 2050yen / night
• TEL: 0827-56-0208 (Management Office)
0827-96-0569 (Ysaka Co.)
• Check-in and Check-out Hours: 16:00~9:00(next day)
• Open from April to November
• Closed: Tuesdays (No closing days during summer)

Each campsite has its own special features and can be used for different means and occasions. Tents as well as other tools and equipment are available for rent. Please contact to each campsite for more information.

Yasakakyo Valley **MAP:P10 B-2**

(designated as a National Site of Scenic Beauty)



The natural erosion formed uniquely shaped granite rocks such as Kimen-iwa (ogre-looking rocks) and Byobu-iwa (steep cliff). Visitors can stroll on a path along Ozegawa River and observe these rocks in beautiful nature.

Lake Plaza Yasaka **MAP:P10 C-2**



Lake Plaza Yasaka is a restaurant located right by Yasaka Lake. Visitors can also buy local products and fresh produce at the plaza. Local sweets made from local "Ganne-chestnut" are popular among the visitors. There is also a tourist information booth and a rest area inside the plaza.

• Hours: 9:00~17:00 • Restaurant: 9:00~15:00 (L.O. 14:00) • Closed: Tuesdays
• Address: 10281-2 Yuritani Miwa-machi Iwakuni-City • TEL: 0827-96-0569
CARD Major credit cards accepted.

Yasaka Lake Rental Boat **MAP:P10 C-2**



Around Yasaka Lake, there are various recreational facilities and walking-paths along the way. Visitors can rent a boat and cruise around the lake, go lure fishing, or take canoe lessons.

• Hours: Summer (April~October) 7:00~16:00 / Winter (November~March) 8:00~16:00
• Closed: Tuesdays (From December to February only open on Saturdays and Sundays.)
• TEL: 0827-96-1203

Myojin-bara Nagomi Park **MAP:P10 B-2**



Myojin-bara Nagomi Park gives you a feeling of being in Japan's rural area. A small river runs through the park and it has a water mill, barbecue site, and an open grass square. There are thousands of cherry blossom trees in and around the park, and you can enjoy a beautiful view in spring.

• Contact: Regional Promotion Section, Integrated Miwa Office
• TEL: 0827-96-1111



Nishikigawa Seiryu Line

錦川清流線 MAP:P10 B-3

The local Nishikigawa Seiryu Line runs parallel to the Nishiki River. It takes 68 minutes from JR Iwakuni Sta. to Nishikicho Sta. The visitors can relax and enjoy the spectacular view of the mountain, river and seasonal nature from the train window.

- Fees for one way: Adults:1170yen Children:580yen (from JR Iwakuni Sta. to Nishikicho Sta.)



- Fees for one way: Adults:650yen Children:300yen ※Discount rate for group of 20 or more: Adults:500yen Children:250yen
- Operating Period: Late March to late November (Sat, Sun, and Holidays) ※Runs everyday during spring and summer vacation • Contact: Nishikigawa Railway Company
- Address: Hirose Nishiki-machi Iwakuni-City • TEL: 0827-72-2002

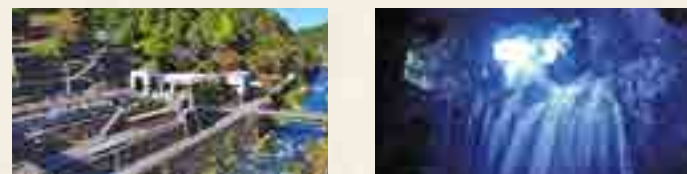
■ Tokotoko Train (sightseeing trolley train) MAP:P10 A-2

Tokotoko Train runs slowly for 6km between Nishikicho Sta. to Souzukyō Sta., taking about 40 minutes. You can enjoy the seasonal landscape of the beautiful valley, trees and flowers along the Usa River. The special feature is a tunnel with shining art of fluorescent stones.



■ Underground Kingdom "Mikawa Mu Valley" MAP:P10 A-3

The Underground Kingdom Mikawa Mu Valley is an adventure park set inside an old mine. There are giant stone statues, temples, paintings, waterfalls and a lake inside the 1km mine. Visitors can join adventurous attractions and games such as treasure hunting and sifting for gold. There is also a restaurant for people to dine at.



- Admission Fees: Adults (junior high-school students and older):1980yen Children (4 years and older):990yen
- Closed: Tuesdays & Wednesdays excluding the busy season • Opening Hours:10:00~16:00
- Address: 1564-1 Negasa Mikawa-machi Iwakuni-City • TEL: 0827-77-0111



Hot Springs in Iwakuni

岩国の温泉

Hot springs in Iwakuni are radium springs containing radon. Radium springs are known as "healing springs" for their health benefits such as fatigue recovery and health promotion. They are also believed to be effective for gout, arteriosclerosis, high blood pressure, chronic skin diseases, female disorders, arthritis and so on.

Rules and Manners of Hot Springs

- Rinse your body with hot water before you enter the bathtub.
- Tie your hair up if it is long.
- No towels are allowed inside the bathtub water.
- Do not wash your body inside the bathtub.
- Do not run, make noises or swim in the bathtub.
- Wipe your body before entering the locker room or the sauna.
- Refrain from bathing when you are sick or after you drink alcohol.
- Be considerate when washing or showering.

■ Iwakuni Kokusai

Kanko Hotel MAP:P10 C-3

- Hours:11:00~22:00 • Open all-year-round
- Fees: Adults:1700yen Children (3~12 years old):800yen ※Must be accompanied with adults
- Address: 1-1-7 Iwakuni Iwakuni-City
- TEL: 0827-43-1111
- Outdoor Bath and Sauna are available in this facility



■ Yuu Hot Springs MAP:P10 C-4



- Hours: 10:00~21:00 • Closed: Tuesdays
- Fees: Adults:990yen Children (4 years old to elementary school):500yen
- Address: 777 Yuu-machi Iwakuni-City • TEL: 0827-63-0755
- Out-door Bath, Sauna and Bedrock Bath (for additional charge) are available in this facility.

■ Fukatanikyo Hot springs Seiryu-no-sato MAP:P10 B-1



- Hours: 10:00~19:00 • Closed: Wednesdays
- Fees: Adults (junior high school students or older):650yen Elementary school students:300yen Children 2 years or older:200yen
- Address: 1075 Usago Nishiki-machi Iwakuni-City • TEL: 0827-74-5100

Souzukyō Hot springs

■ Iko-no-ie MAP:P10 B-2



- Hours: Dec.-Mar.11:00~17:30, Apr.-Nov.10:30~18:00
- Closed: Thursdays • Fees: Adults:700yen Children:400yen
- Address: 3132 Fukagawa Nishiki-machi Iwakuni-City
- TEL: 0827-73-0236

■ Nishiki Palace MAP:P10 B-2



- Hours: 15:00~20:00 • Open all year round (Except New year holidays)
- Fees: Adults:700yen Children:400yen
- Address: 3132-2 Fukagawa Nishiki-machi Iwakuni-City
- TEL: 0827-73-0211

Irori Sanzoku

(Also known as chicken shack)

- [Kuga Area] MAP:P10 B-3**
 - Address: 1380-1 Kuga-machi Iwakuni-City • TEL: 0827-82-3115
 - Sanzoku / Hours: 10:00~24:00 (L.O. 23:00) Closed: Irregular
 - Kamado / Hours: 10:00~24:00 (L.O. 23:00) Closed: Irregular
 - Tourian / Hours: 10:00~24:00 (L.O. 23:00) Closed: Irregular
- [Shuto Area] MAP:P10 B-4**
 - Address: 2354-1 Nishinagano Shuto-machi Iwakuni-City • TEL: 0827-84-3914
 - Oimatsu / Hours: 10:00~24:00 (L.O. 23:00) Closed: Irregular
- [Nishiki Area] MAP:P10 A-2**
 - Address: 889 Bojigatoge Ono Nishiki-machi Iwakuni-City • TEL: 0827-72-2836
 - Sanzoku-toride / Hours: 10:00~22:00 (L.O. 21:00) Closed: Irregular
 - Ittousen / Hours: 10:00~22:00 (L.O. 21:00) Closed: Irregular



Kin nan Steakhouse



Takamori Beef has established its position as one of the most well-known beef brands of Iwakuni. Visitors can enjoy Takamori Beef's delicious flavor as well as its tenderness at a reasonable price at Kinnan. English menu is available.

- Hours: 11:30~15:00 (L.O. 14:00) 17:00~21:00 (L.O. 20:30)
- Closed: Mondays (the following day if a public holiday falls on Monday)
- Address: 3-3-4 Nakazu-machi Iwakuni-City
- TEL: 0827-22-8136

Pureline Nishiki Michi-no-eki



It's a tourist facility in Nishiki-machi located on the banks of the Usa River along National Route 187. Surrounded by the beautiful mountains, many visitors use this facility for a restaurant that serves local dishes, a shop to buy local produce and a tourist information booth.

- Hours: 9:00~18:00
- Closed: Souvenir Corner: No closed
- Restaurant: Tuesdays (expect for National Holidays on Tuesday, in which case it is open on the holiday and closed the following Wednesday instead)
- Address: 117 Funotani Nishiki-machi Iwakuni-City
- TEL: 0827-71-0011

Minato Oasis Yuu Shiohaze Park



Minato Oasis Yuu is a tourist facility located right by the beautiful Seto Inland Sea. The facility has a seafood restaurant and a shop to buy local products. There is also a 450m long beach and a shower room for summer leisure.

- [Product sale Corner]
- Hours: 9:30~18:00 (March to October) 9:30~17:00 (November to February)
- Closed: Tuesdays (Opens everyday during summer)
- Address: 8500-6 Yuu-machi Iwakuni-City
- TEL: 0827-62-0155
- ※The beach opens in the middle of July

Iwakuni Local Sake (Sake breweries)

High quality Sake is produced where water is clear and pure. Nishikigawa River in Iwakuni was selected as one of Japan's top 100 Exquisite and Well-Conserved Waters. There are 5 Sakegura (Sake breweries) in Iwakuni and they are famous for their nationally recognized sake brands.

<p>Gangi Yaoshin Shuzou</p> <p>MAP:P10 C-3</p> <ul style="list-style-type: none"> Address: 3-18-9 Imazu-machi Iwakuni-City TEL: 0827-21-3185 Hours: 8:00~18:00 (10:00~17:00 on Saturdays) Closed: Sundays and Holidays 	<p>Gokyo Sakai Shuzo</p> <p>MAP:P10 C-3</p> <ul style="list-style-type: none"> Address: 1-1-31 Nakazu Iwakuni-City TEL: 0827-21-2177 Hours: 8:00~17:00 Closed: Saturdays, Sundays and Holidays 	<p>Murashige Murashige Shuzo</p> <p>MAP:P10 C-3 CARD</p> <ul style="list-style-type: none"> Address: 5-101-1 Misho Iwakuni-City TEL: 0827-46-1111 Hours: 9:00~17:00 Closed: Bon and New Years Holidays 	<p>Kinsuzume Horie Sakaba</p> <p>MAP:P10 A-2</p> <ul style="list-style-type: none"> Address: 6781 Hirose Nishiki-machi Iwakuni-City TEL: 0827-72-2515 Hours: 8:30~18:00 Closed: Sundays and Holidays 	<p>Dassai Asahi Shuzo</p> <p>MAP:P10 B-3 CARD</p> <ul style="list-style-type: none"> Address: 2167-4 Osogoe Shuto-machi Iwakuni-City TEL: 0827-86-0800 Hours: 9:00~17:00
---	---	---	---	--

IWAKUNI MAP

